

# Geneglance F600 (x3) ice plant - 42T/24H

## Specifications

Brand	Geneglance
Type	F600 (x3) ice plant - 42T/24H
Capacity	42.000 kg/24hr
Refrigerant	Freon (R449a)
Sizes	12192x2438x2896 mm (LxWxH)
Remarks	Y.o.b. 2015
Stock	1



## Description

### Used Geneglance F600 (x3) ice plant - 42T/24H

In good condition complete Geneglance F600 (x3) plug and play ice installation on R449A (Freon) built in 2015. The ice plant is installed in a sea freight container what makes the installation compact and perfect for transport. Connect the power and water and the set is ready to make ice. The installation can produce around 30.000 kg till 42.000 kg of flake ice each day. The capacity depends on multiple circumstances and water inlet temperature.

The installation is complete with 3 Geneglance F600 flake ice machines that each produce around 10.000 kg till 14.000 kg of flake ice every 24 hours out of fresh water. The ice machines

are mounted on a frame, with a collecting tray at the bottom containing a screw that transports the flake ice to the blower. The blower propels it into the air, creating artificial snow. The installation can also be used for other purposes ofcourse.

Further the installation comes with a Bitzer HSN 8591-160-40P semi-hermetic screw compressor, GEA WTT GBS 700M-24 brazed heat exchanger as economizer, Provides two stage oil separator with a volume of 343 liters, WTK P7-24 SF/\_S brazed heat exchanger as oil cooler, EM Polar liquid seperator with a volume of 853 liters and a Hermetic CNF 32-160 liquid pump, Provides shell and tube water-cooled condenser that gets chilled water from the Berkmann BKD 24/21-1 cooling tower provided by a Lowara NSCS 65-200/30/P45RCC4 water pump. This flake ice set comes with a control cabinet with a Siemens PLC to control all components and set the ice machines to the customer's needs. For example you can control the cooling tower, water treatment and salt dosing, supported by multiple Toshiba frequency converters.

Capacity: 30.000 kg - 42.000 kg flake ice each 24 hours

Dimensions: 12.192x2.438x2.896 mm (LxWxH)

Netto weight: 15.000 kg

For more information please feel free to contact us!

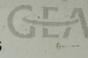
\*Why choose for HOSBV? Were not only the largest used refrigeration specialist in Europe, but also, we deliver all equipment including an extensive test, warranty and industrial cleaning. \*If



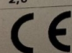
requested we are happy to arrange  
your logistics.

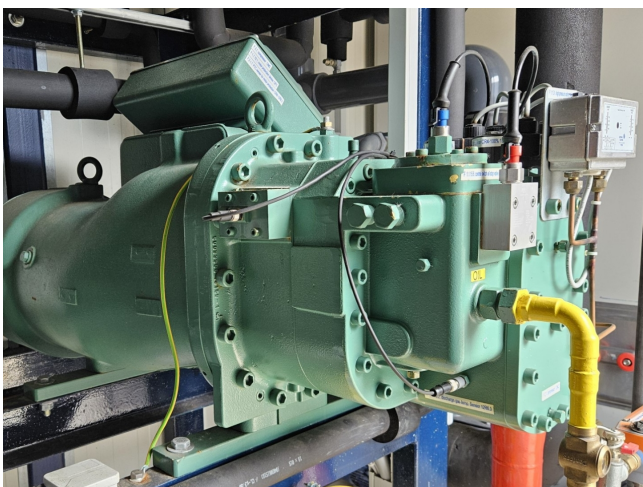
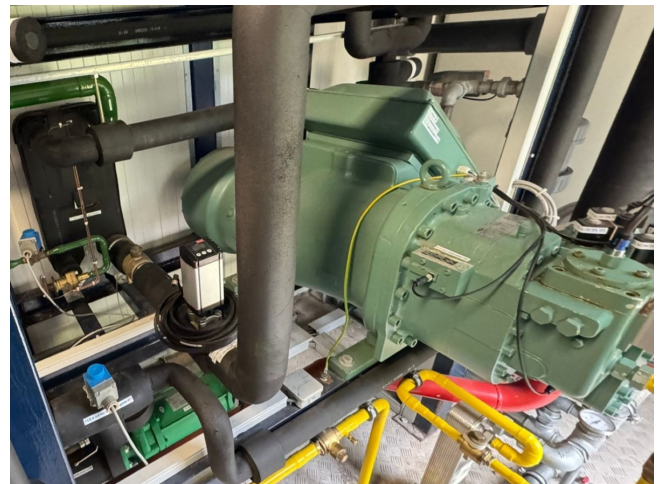





GEA Refrigeration France s.a.s.   
**Technology Centre Ice Machines**  
 9, rue des Orfévres  
 44840 Les Sorinières - France  
 +33(0)2 51 19 10 51

Type / Model	F600 SBF	
N° Série construction Construction serial number	151345 F600	
Année de fabrication Manufacturing year	2015	Fluide Fluid R404A
Pressions mini/maxi admissibles (PS) Minimaxi allowable pressures	-1 / +18,5	Bar
Températures mini/maxi admiss. (TS) Minimaxi allowable temperatures	-30 / +45	°C
Pression d'épreuve (PT) / Test pressure	20,4	Bar
Date d'épreuve / Test pressure date	25/09/2015	
Groupe de fluide / Fluid group	2	
Charge fluide maxi / Maxi refriger. charge	40	KG
Tension - Phase(s) / Voltage - Phase(s)	400 V-3+N+T	Ph.
Fréquence / Frequency	50	Hz
Puissance installée / Installed power	0,9	kVA
Intensité maxi / Maxi amperage	2,0	A

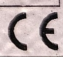
ENR-1RA-014 vD 

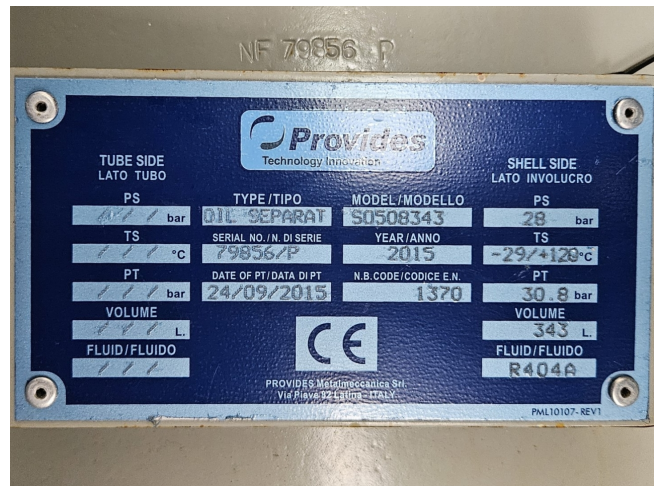


 Typ HSN8591-160-40P  
 S.Nr. 1088801062

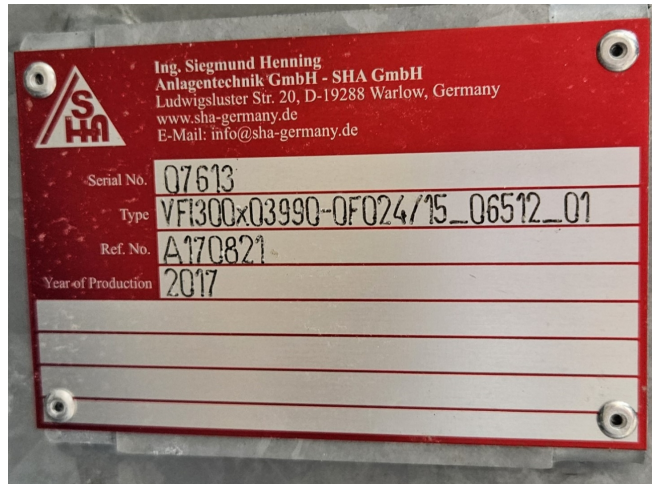
**BITZER KÜHLMASCHINENBAU GMBH**  
 Made in Germany

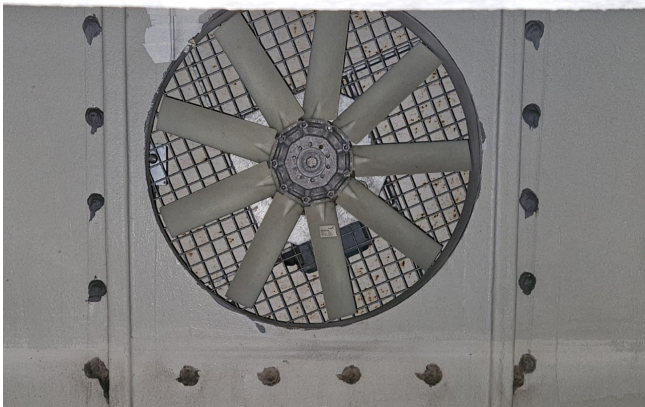
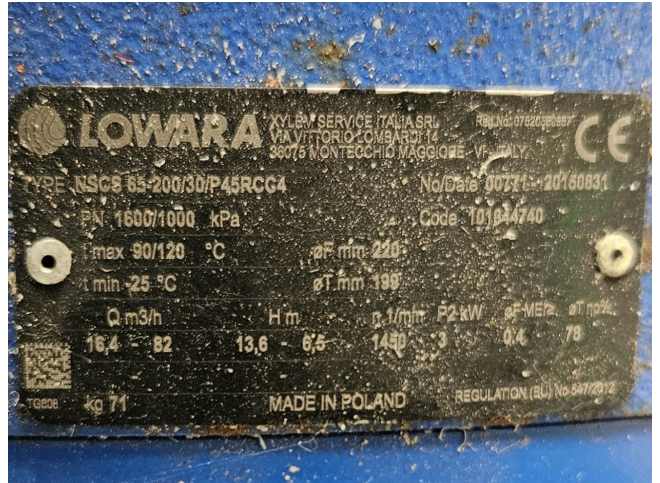
Nennspannung	Frequ.	Betr. strom	Anlaufstrom	Fördervol.	Drehzahl
V 3Ph~	Hz	A (max)	A (Δ)	m³/h	min <sup>-1</sup>
380-415	50	274	729	1114	2900
440-480	60	274	729	1114	3500

IP 54 ND/HD max. T9 / 28 bar 











<b>KTI.</b>		Konformität / Conformity:	
CE 0036		nach DGRL 2014/68/EU according PED 2014/68/EU	
Hersteller / Manufacturer:	KTI-Plersch Kältetechnik GmbH		
Anlagentyp / Unit Type:	CSP-100-50Hz-R449a-cl-GG		
Herstellernummer / Manufacturer No.:	K00201627.K15-00107		
Kundennummer / Customer No.:	-		
Baujahr / Construction year:	2015/2019		
<b>Kälteanlage / Refrigeration plant</b>			
Ausgangsbedingungen / Design conditions			
	Kältemittelkreislauf / Refrigerant circuit	Kälteleiterkreislauf 1 / Coolant circuit 1	Kälteleiterkreislauf 2 / Coolant circuit 2
Hochdruck / High Pressure:	25,0 bar	-	6,0 bar
Niederdruck / Low Pressure:	18,0 bar	-	6,0 bar
Wärmedückerkreislauf / Heat transfer fluid circuit			
Betriebsmittel / Operating material:	R449A	-	Wasser / Water
Fluidgruppe / Fluid group:	2	-	2
Füllmenge / Filling quantity:	440 kg	-	500 kg
Kälteleistung / Cooling capacity:	221 kW	-	500 kg
Kältemaschinenöl / Refrigerant oil:			
KTI BlueC F100			
Füllmenge / Filling quantity:			
50 l			
<b>Raumkühlung / Room cooling</b>			
Ausgangsbedingungen / Design conditions			
Kältemittelkreislauf / Refrigerant circuit			
Hochdruck / High Pressure:	-		
Niederdruck / Low Pressure:	-		
Betriebsmittel / Operating material:	-		
Fluidgruppe / Fluid group:	-		
Füllmenge / Filling quantity:	-		
Kälteleistung / Cooling capacity:	-		
Kältemaschinenöl / Refrigerant oil:			
Füllmenge / Filling quantity:			
-			
<b>Allgemeine Daten / General data</b>			
Elektrische Versorgung / Electrical supply:			
400 V / 3~ / 50 Hz			
Elektrische Leistungsaufnahme / Electric power consumption:			
170 kW			
Elektrische Stromaufnahme / Electric current consumption:			
300 A			
Betriebsgewicht / Operating weight:			
ca. 16.500 kg			
KTI-Plersch Kältetechnik GmbH   Carl-Otto-Weg 14/2   D-88481 Balzheim			

